

New Faculty Orientation

Office of the Dean of Wake Forest College

Friday, August 18, 2017



WAKE FOREST
UNIVERSITY



- **9:25 a.m.: Welcome!**
 - José Villalba, Interim Chief Diversity Office
 - Overview of the Day
-

- **9:30am: Introduction to the College**
 - Michele Gillespie, Dean of Wake Forest College
 - Introduction and Welcome
 - The Associate Deans and Support Staff
-

Faculty Resources

« [College Home](#)

[Teacher-Scholar Ideal](#) 

[Teaching](#)

[Fellowships](#)

[Funding & Awards](#)

[Resources & Policies](#)

[New Faculty](#)

[Meetings](#)

[Committees](#)



[CONTACT THE COLLEGE](#)

Teacher-Scholar Ideal

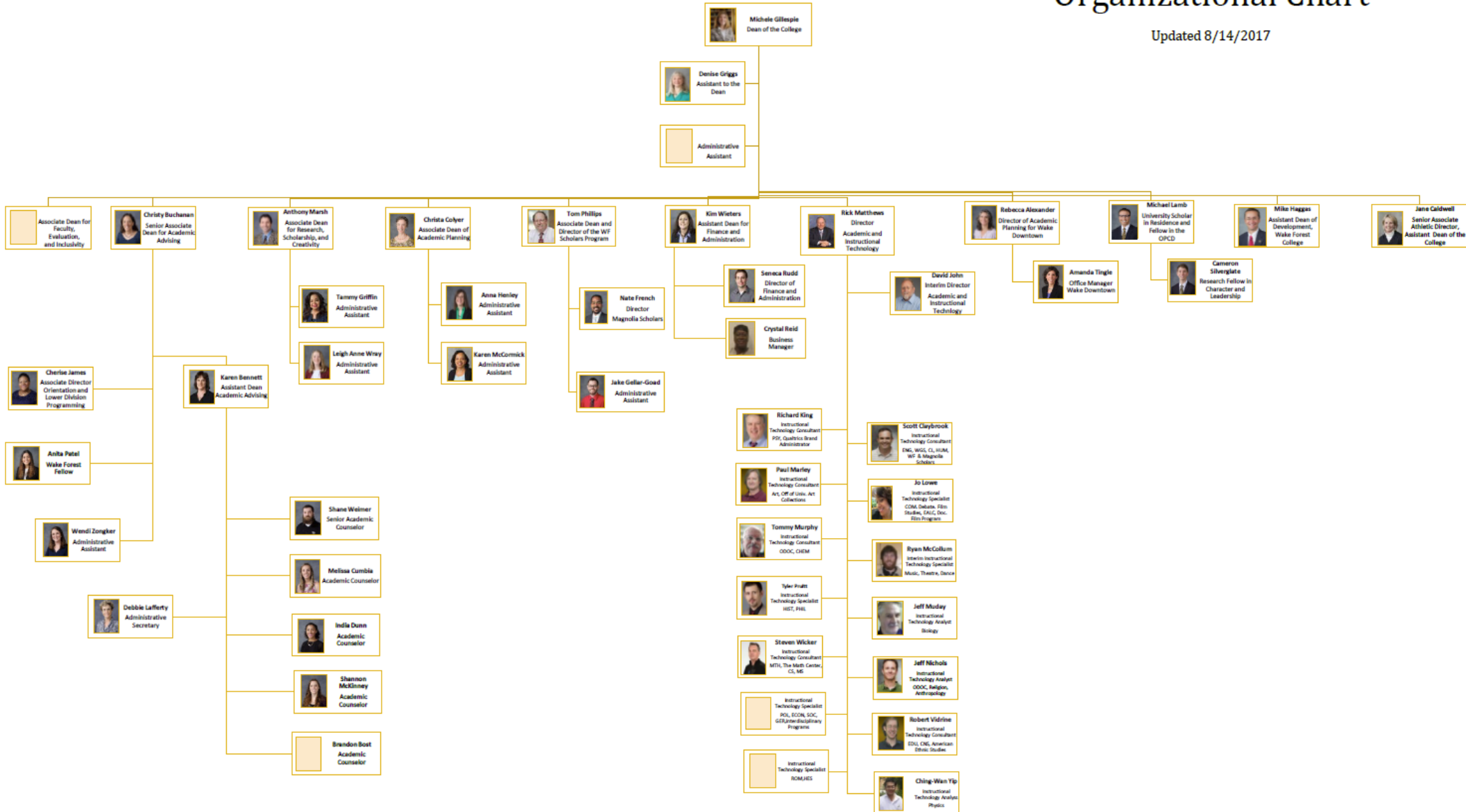
The duties of all faculty members are described in the Wake Forest Faculty Handbook (<http://ir.wfu.edu/faculty-handbook>). In addition, the College Faculty reaffirmed their commitment to the Teacher-Scholar in the development of the College Strategic Plan in 2007 (<http://strategicplan.wfu.edu>) and these guidelines serve as the expectations for their merit evaluation process:

1. Excellent teaching at all levels, student engagement, and advising.
2. Advancing the frontiers of knowledge through nationally/internationally recognized research, scholarship, interdisciplinary activities and/or creative work.
3. Involvement of students in research, scholarly or creative work and/or academically-oriented service learning, community-based research, civic engagement, and experiential learning.
4. Active participation in the governance and life of the program, department, college, and university.

What is a Wake Forest Teacher-Scholar?

- **The Wake Forest Faculty Handbook (<http://ir.wfu.edu/faculty-handbook/>) discusses the Teacher-Scholar Ideal and the duties of a ALL faculty members, like you...**
 - **College Faculty are committed to the Teacher-Scholar Ideal:**
 - Excellent teaching and mentoring of students.
 - Advancing the frontiers of knowledge through nationally/internationally recognized research, scholarship, interdisciplinary activities and/or creative activities.
 - Involvement of students in research, scholarship, creative activities and/or academically-oriented service learning and experiential learning.
 - Active participation in governance and life of the department, College, and WFU.
 - Active, consistent, and extensive presence on campus (or at campus-related or research facilities) during the academic work week and regular face-to-face availability to students and colleagues. (Note: “regular availability” does not mean that a faculty member needs to be available all of the time.)
 - **These guidelines service as the College’s expectations for the merit evaluation process, and if applicable, for tenure and promotion purposes.**
-

Updated 8/14/2017



- **10:00am: Christy Buchanan, Senior Associate Dean for Academic Advising**
 - The Role of the Office of Academic Advising
-

- **10:15am: Tony Marsh, Associate Dean for Research, Scholarship, and Creativity**
 - Where to go when you need help around Scholarship and Creative Work
 - Support for Professional Development and Success
 - Leaves, Fellowships, and Funding
 - Tenure and Promotion
-

- **10:30am:**
 - **John Dinan, Professor of Politics and International Affairs and Judicial Council Chair**
 - **Barry Maine, Professor of English and Judicial Liaison**
 - HEC Committee
 - The Role of Faculty Governance
-



15-min Break!

- **11:00am: Case Study Discussions**
 - In a moment you will be provided with 2 cases
 - We will process one at a time
 - As we proceed through each, please consider the following 4 questions:
 - How might you best help this student?
 - What makes you the most concerned?
 - What's most in your “comfort zone” regarding the case?
 - How might you follow-up with this student?
-

- **Campus Partners**

- Wake Forest Scholars – *Tom Phillips, Associate Dean*
 - <http://college.wfu.edu/scholars/>
 - The Writing Center – *Ryan Shirey, Director*
 - <http://college.wfu.edu/writingcenter/>
 - Office of Personal and Career Development – *Lee Svete, Associate Vice President*
 - <http://opcd.wfu.edu>
 - Teaching and Learning Collaborative – *Kristi Verbeke, Interim Executive Director*
 - <http://tlc.wfu.edu/>
-

- **Campus Partners, continued**

- Magnolia Scholars Program – T. Nate French, *Director*
 - <http://college.wfu.edu/magnolia/>
 - The LGBTQ Center – *Angela Mazaris, Director*
 - <http://lgbtq.wfu.edu/>
 - The Women’s Center – *Paige Meltzer, Director*
 - <http://womenscenter.wfu.edu/>
 - The Counseling Center – *James Raper, Director*
 - <http://www.wfu.edu/ucc/>
 - InterCultural Center– *Matt Williams, ODI Director of Communications*
 - <http://interculturalcenter.wfu.edu/>
-



- **1:30 p.m.: Wake Forest Faculty Experiences**
 - A Panel Discussion of Exemplary Teachers and Scholars
 - *Diego Burgos* – Spanish (Div. 2)
 - *Betina Wilkinson* – Politics and Int. Affairs (Div. 4)
 - *Sam Gladding* – Counseling (Div. 1)
 - *Stew Carter* – Music (Div. 3)
 - *Staci Hepler* – Math (Div. 5)
-

2:30pm: Student Athletics Orientation

- **Jane Caldwell**, Senior Associate Athletic Director; and Assistant Dean of the College
-

- **Thank you for your time and energy today**
 - **If you have additional questions, please don't hesitate to reach out to us during the year**
 - **A special thanks to Karen McCormick for, as always, planning this event**
 - **Now, please join us for a reception**
-